

ENERGY FOR THE WORLD. OPPORTUNITY FOR PAPUA NEW GUINEA

PNG LNG PLANT SITE NEWSLETTER



Moving heavy and wide loads

As the construction phase of the Project continues, so does the need for more heavy equipment on the Plant Site.

The amine absorber, which successfully arrived from Motukea Island late last month, is just one of almost 350 heavy and wide loads scheduled for transport to the site from November 2011 to October 2012.

Moving at just five kilometres per hour to ensure safe transfer of these sensitive pieces of equipment, transporters will be a more frequent sight on the route in the coming months.

Following meetings between EHL's Land and Community Affairs team regarding transport timings, communities requested that wide loads leave from Motukea later in the morning to help early morning travellers get to Port Moresby without delay. With that in mind, CJJV has now scheduled loads requiring temporary double lane closure to leave Motukea at 8:30am, one hour later.

CJV Security and Nippon Express will direct all heavy and wide loads coming to site. CJJV will further direct public vehicles through detours via the old road and put up traffic signals to mark speed and driving patterns.

Delays of up to 20 minutes are expected for people travelling to and from town. The expected delay between the Plant Site and Boera turn-off is up to 60 minutes.

EHL's Land & Community Affairs team will continue to update community on the dates and timing of loads that need temporary road closure. For more information, talk to your Community Liaison Officer or check your community notice board for heavy and wide load schedule timetables.

INSIDE THIS ISSUE

Supporting the voices of women	2
Building the foundation for student development	2
Students on the go: Update on trainees for the PNG LNG Project	3
PNG engineering students in Japan take learning to a new level	3
Operations and Maintenance students are quipped for the future	3
Semac 1 captures attention in Caution Bay	4
Kids Kona	4

Loading the Self Propelled Modular Transporter



Amine Absorber entering the Plant Site



Amine Absorber travelling to the Plant Site



Supporting the voices of women

Women play an important role in developing their communities, but sometimes their voices are not heard at community meetings. To make sure we are listening, EHL's Land & Community Affairs team has started meeting with community women's groups to learn their perspectives and opinions.

These meetings cover the matters discussed in whole community engagements as well as explore further opportunities for women to tap into their own skills and voices.

The Enterprise Centre is also working closely with women's groups, helping Papa women establish Papa Magia Limited, training LeaLea women in Business Basics so they can build their mini-market, and assisting Porebada women and Porebada Ahine Limited to grow their business capabilities.

L&CA will continue to hold these meetings regularly as a way of ensuring that women continue to be active participants in the development of their communities.



LeaLea Women's Group meeting with the Enterprise Centre



Boera Women's Group Plant Site Tour

Building the foundation for student development



Madeline Steven and Dia Kila helping their community



Relaying the Boera Primary School classroom floor

One of the best ways to develop the abilities and future prospects of youth is to focus on their education.

With this in mind, over the last eight months, the Project has supported several school initiatives to create safer, healthier and better equipped learning environments.

Working through its Short Term Investment Project program (formerly known as Rapid Improvement Projects), the Project recently rebuilt four classrooms at Boera Elementary School – replacing structural wood frames, laying concrete floors and rebuilding desks.

With the help of CJJV, and donations from Wagner, the Port Moresby

Construction Training Facility (POMCTF) students volunteered their newly learned construction skills to lay the concrete and complete the job.

"Most people think that construction is a man's job, but I'm happy to show I can do that job too," commented Madeline Steven, a trainee from POMCTF. "By working here at the school I am gaining the experience and courage to work at the Plant Site. At the same time, we are giving a helping hand to the community and protecting our children's future."

Short Term Investment Projects have also previously helped LeaLea Elementary, Porebada Primary and Redscar High School cater for the learning needs of its students.

Students on the go: Update on trainees for the PNG LNG Project

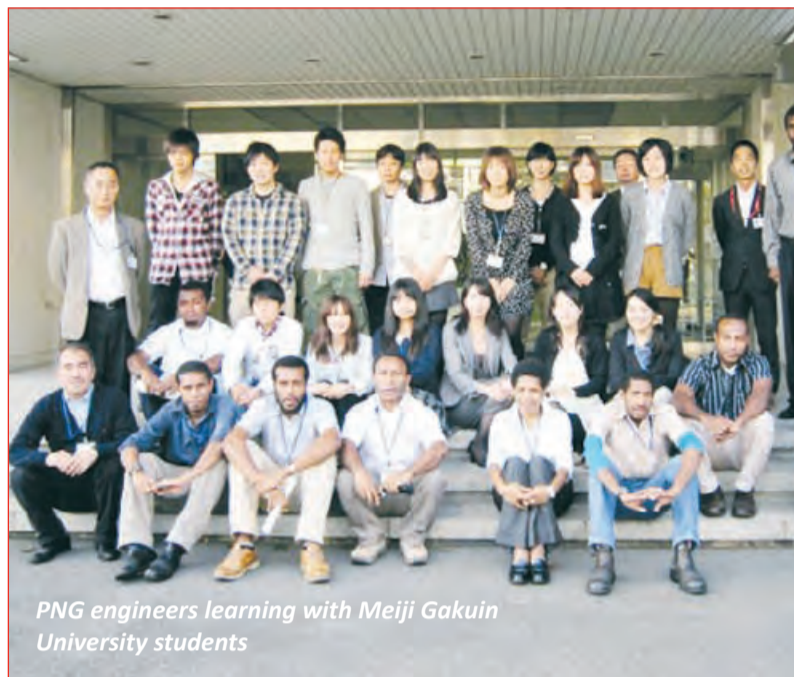
The PNG LNG Project has made a commitment to invest resources to build the capacity of Papua New Guineans. There are a number of training opportunities that people have been involved with. Here's an update about where the students are and what they've been doing.



Joyce Kopunye learning about carbon dioxide extraction at the EBARA factory

PNG engineering students in Japan take learning to a new level

For PNG engineering students currently in Japan, the lessons they are learning both in and outside the Chiyoda classroom hold promise for the future.



PNG engineers learning with Meiji Gakuin University students

Along with exceeding expectations in their training, students are growing more comfortable in living and learning away from home since their arrival last February.

While they are all missing their family, friends and community, they are also very grateful for the opportunity to learn both about work and a new culture at the same time.

Referring to Japan's "kind and respectful" nature, Quality Control student Absalom Waluka

says he enjoys visiting and interacting with the Japanese people, adding he believes "The world can be a very peaceful place if we all respect each other."

The students' training will continue until January 2012, at which time they will return to PNG, their families and careers with high expectations for the future.

Electrical Engineering student, Cain Desiang says when he returns to PNG, he plans "to contribute back to the construction of the plant, and also contribute wherever I can towards... my family, community and eventually the country."

Operations and Maintenance students are equipped for the future

With the PNG LNG Project moving full speed ahead, an initiative is already in place to ensure the plant facilities continue to prosper for many years to come.

From Hides, along the pipeline route, and into the LNG Plant Site, the project is quickly taking shape. Everyone is working hard to make sure we are ready to produce gas in 2014. But who will be operating and maintaining these facilities once gas production starts? The answer is simple: young, bright people from Papua New Guinea.

Enrolled in a three-year Operations and Maintenance training program, 73 students from across PNG are learning all about gas production and how to manage the resource in the safest and most efficient way.

The training began with learning the basics of oil and gas production at the Production Operations Training Centre in Port Moresby. In January, 2012, Operations and Maintenance students will leave for Canada where they will spend one year in advanced training. Once their training is complete, the graduates will return to PNG to work either at the Hides Gas Conditioning Plant in the Southern Highlands or at the LNG Plant Site.

This year's nation-wide application process attracted 3,500 applicants, with 76 students again being selected to train in Operations and Maintenance. Of this year's intake 18 successful candidates come from Central Province with four coming directly from the Plant Site villages. Great local representation!



Operations and Maintenance Students in class

Semac 1 captures attention in Caution Bay

When the Semac 1 arrived in Caution Bay, communities were curious to know more about this unusually large vessel. The best place to view the Semac 1 we heard was from Kahiru beach, Papa.

"It was a once in a lifetime opportunity for us to see a vessel as big as this one," said local resident Joe Maraga. "It was also educational for us as we learnt in the newsletter that this vessel was used to lay underwater pipelines."

Before the Semac 1 left Caution Bay in late October, Joe went to the beach and took some photos to show friends. He also forwarded one to us to include in our newsletter.

While the Semac 1 was a great attraction, it was in Caution Bay to complete a serious job – laying the underwater pipeline. To safely complete this operation, the community was asked to keep a 1,000-metre distance from the vessel and to stay away from EPC2's construction site while the newly welded pipe was pulled to shore. With not one incident recorded, the Project would like to thank you all for your co-operation.

Even with the excitement of some of the activities around the Plant Site, the safety of everyone on site and in community is certainly more important.

To date, the Semac 1 has laid nearly 70 km of its 347 km underwater pipeline journey.



Semac 1 preparing for pipelay



Can you spot the differences?

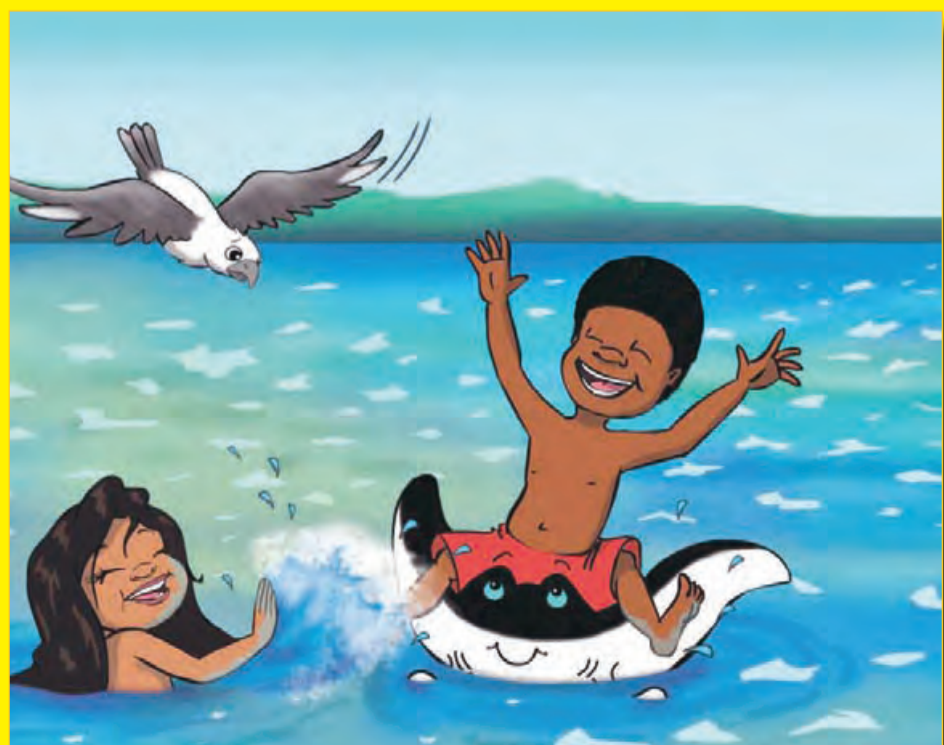


Look at the pictures of Hane and Toea below and see if you can spot the 10 differences we made to the picture on the right.



The left picture is from the children's book Toea's Amazing Hiri Adventure. It is the story of Toea's latest travels. In this book Toea learns about the Hiri Moale, the lagatoi and the traditions of the Hiri people.

Around 80-150 copies of this book were presented by EHL to Plant Site Elementary Schools in late November.



Differences: sea eagle wings, sea eagle tail feathers, Hane's arm, Hane's flower, Toea's hair, Toea's eyebrows, manta ray eyes, manta ray smile, manta ray's tail, background mountain range.