

ExxonMobil

Taking on the world's toughest energy challenges.™

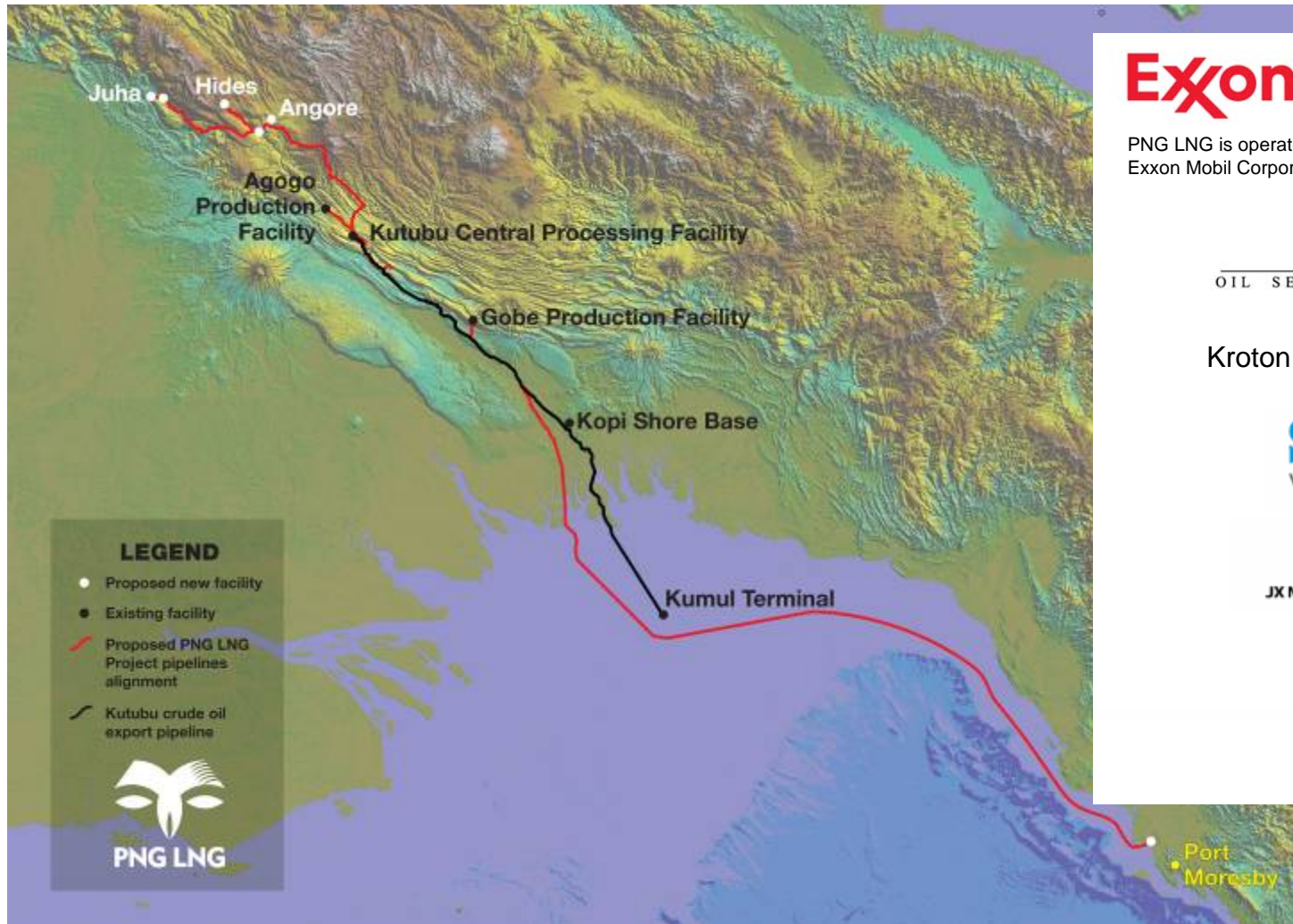
PNG LNG Project

Decie Autin
PNG LNG Project Executive



This presentation includes forward-looking statements. Actual future conditions (including economic conditions, energy demand, and energy supply) could differ materially due to changes in technology, the development of new supply sources, political events, demographic changes, and other factors discussed herein (and in Item 1 of ExxonMobil's latest report on Form 10-K). This material is not to be reproduced without the permission of Exxon Mobil Corporation.

Project outline



ExxonMobil

PNG LNG is operated by a subsidiary of Exxon Mobil Corporation in co-venture with:



OIL SEARCH LIMITED

Kroton No. 2 Limited

Santos

We have the energy.



JX Nippon Oil & Gas Exploration

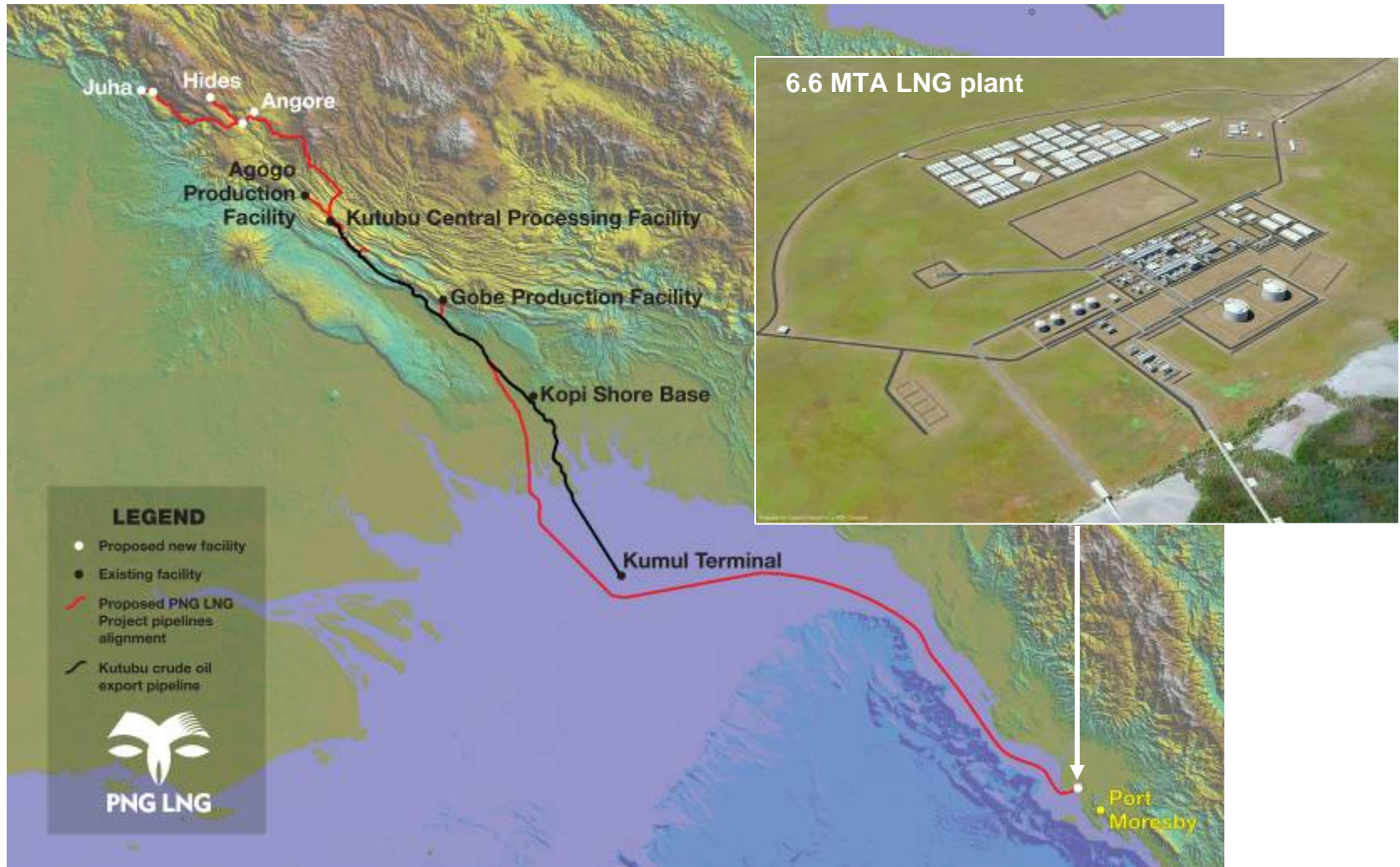


EDA OIL

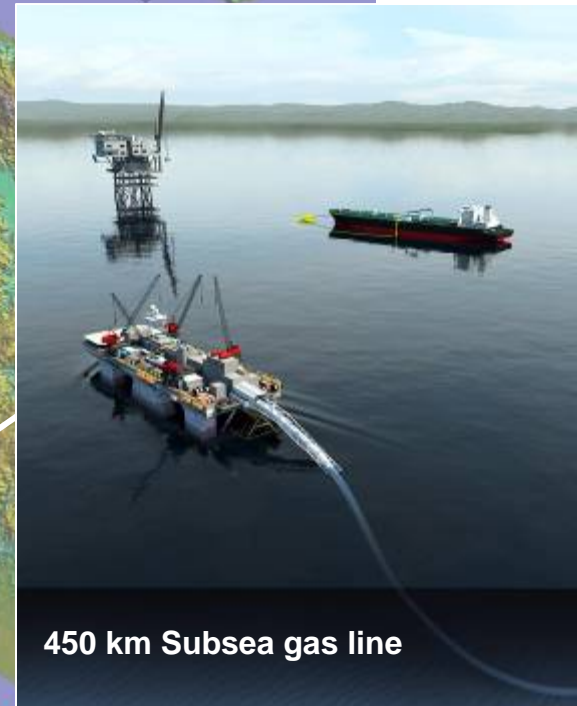
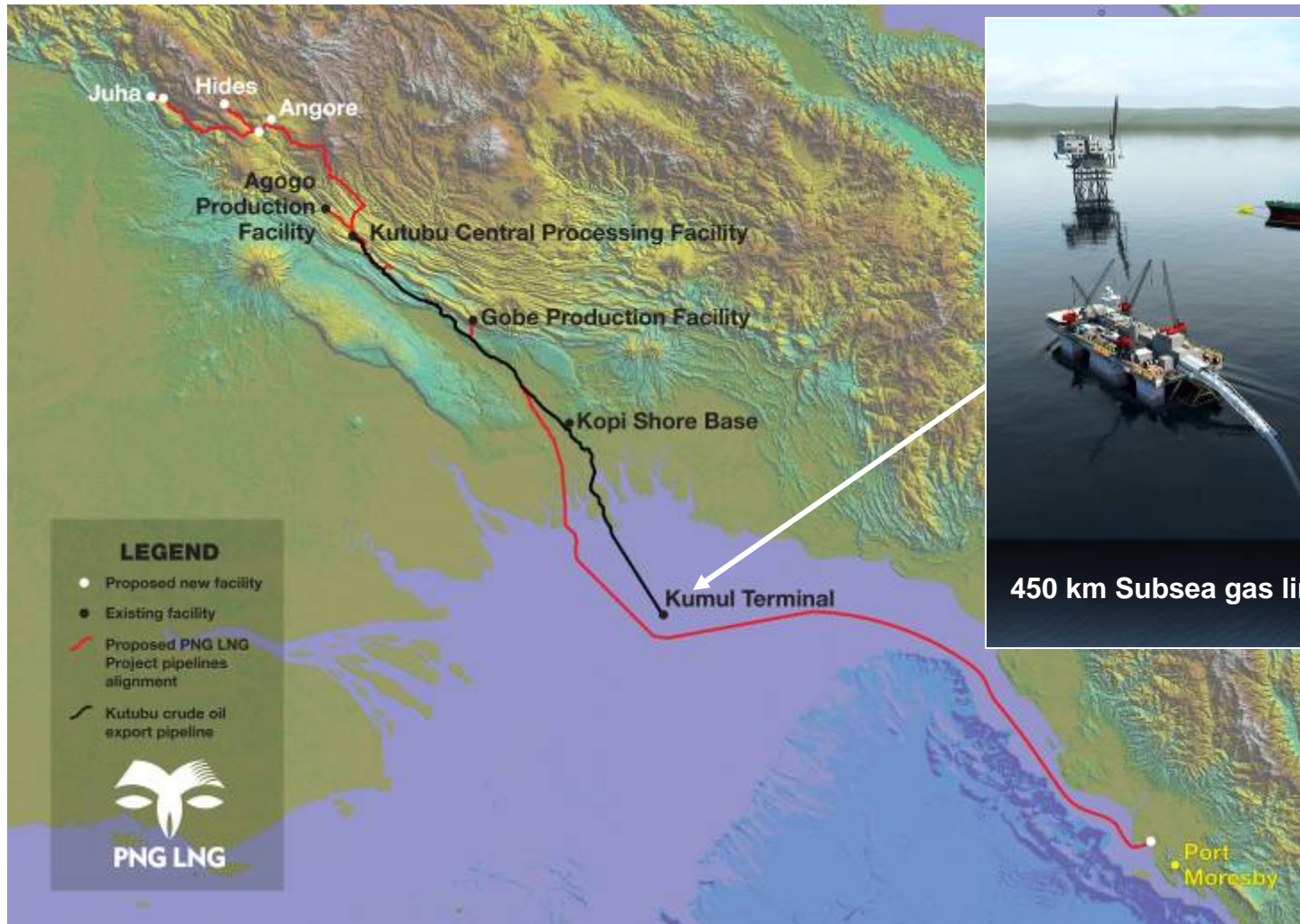


MRDC

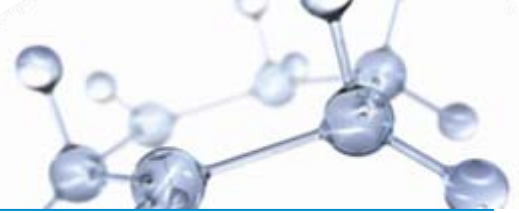
Project outline



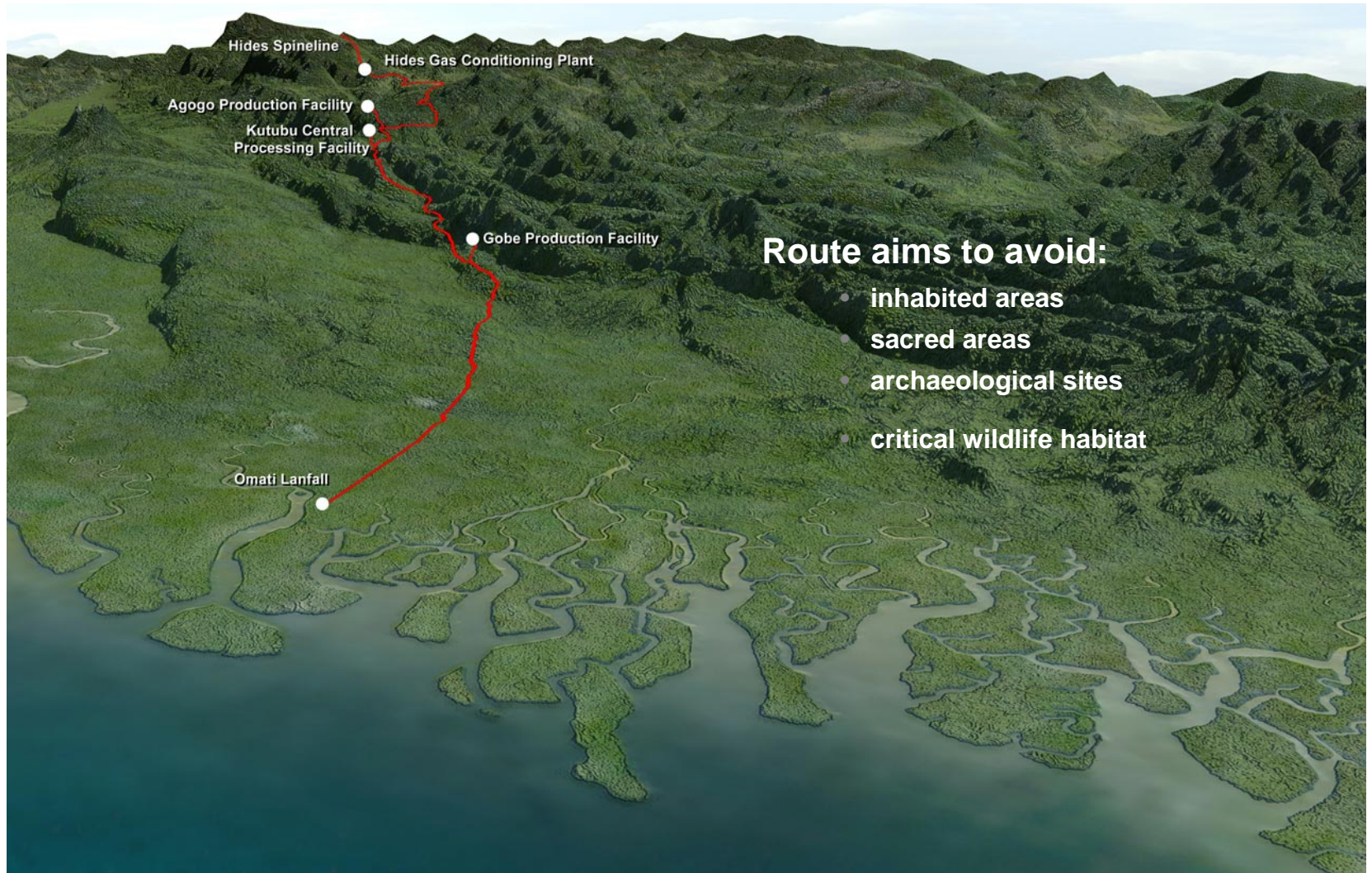
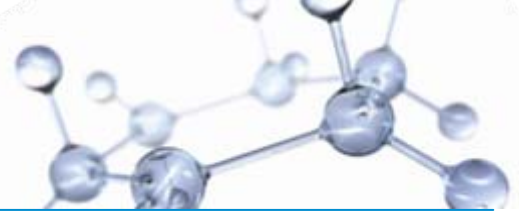
Project outline



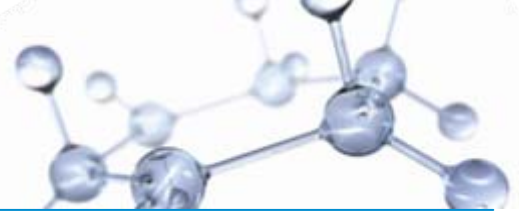
Pipeline Elevation: Omati to Hides



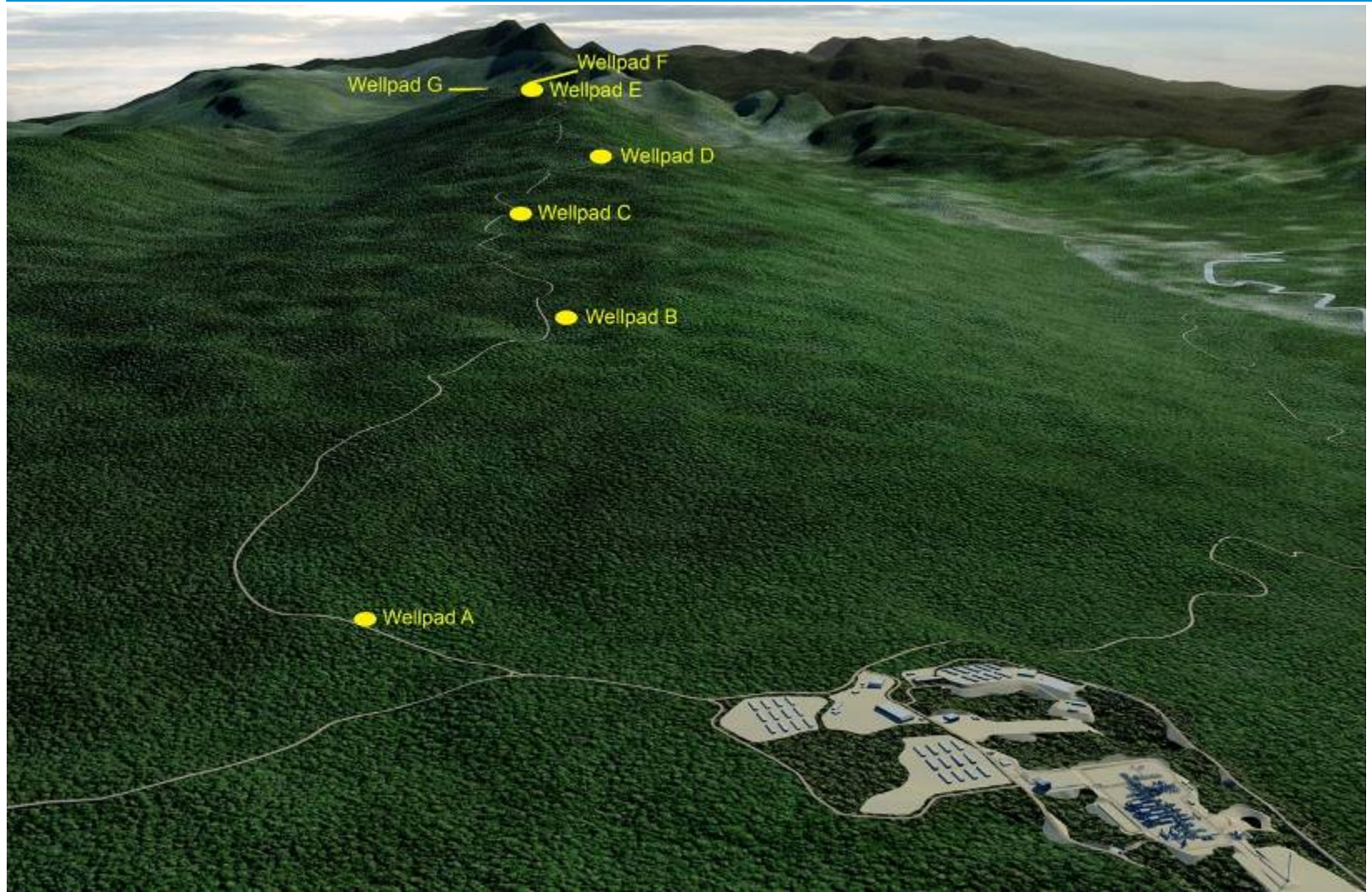
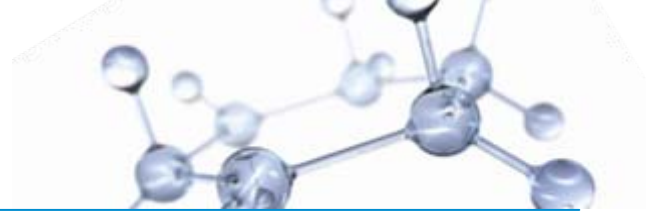
Pipeline Elevation: Omati to Hides



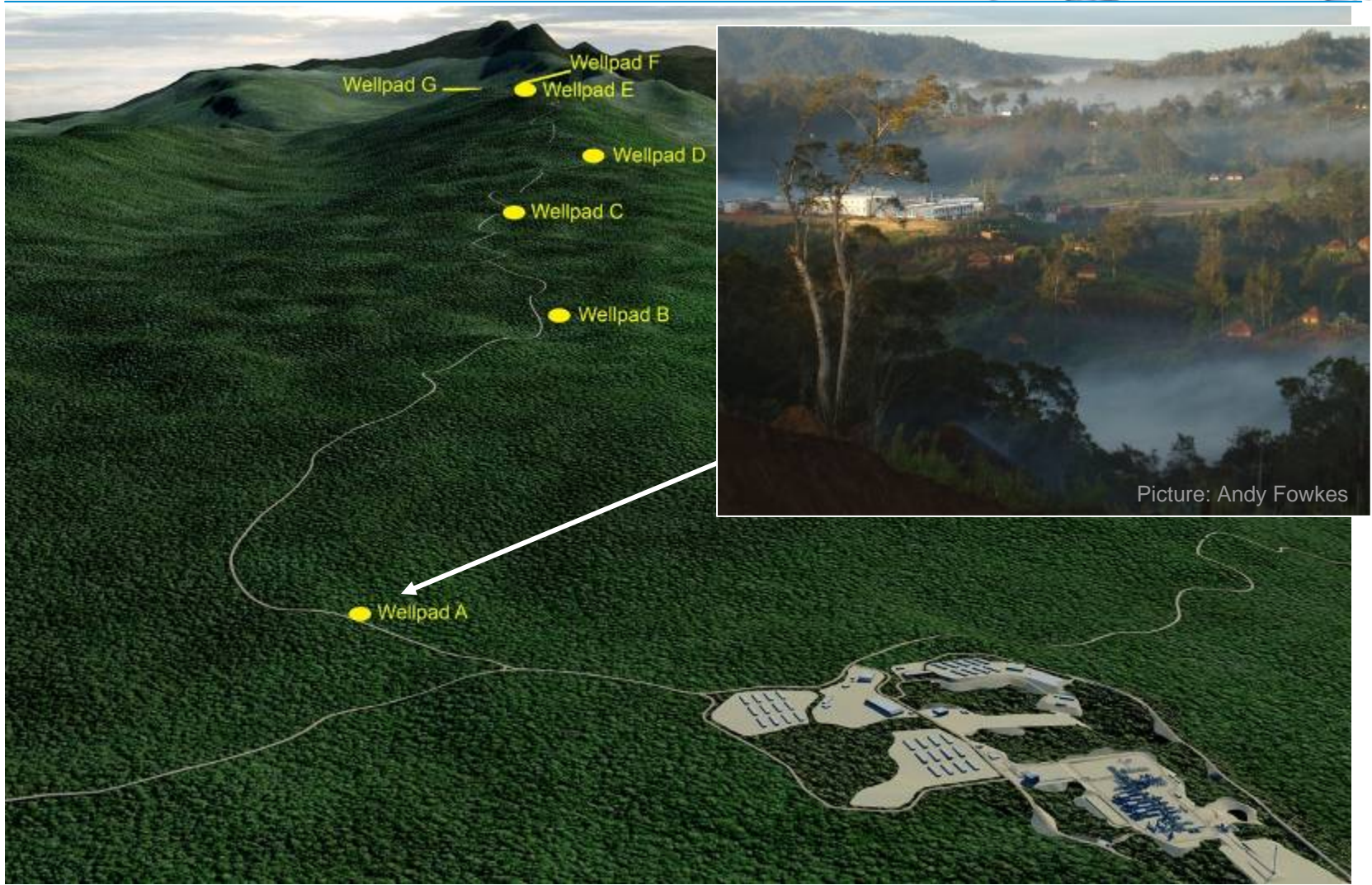
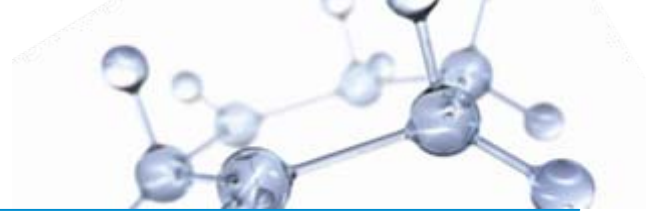
Pipeline Elevation: Omati to Hides



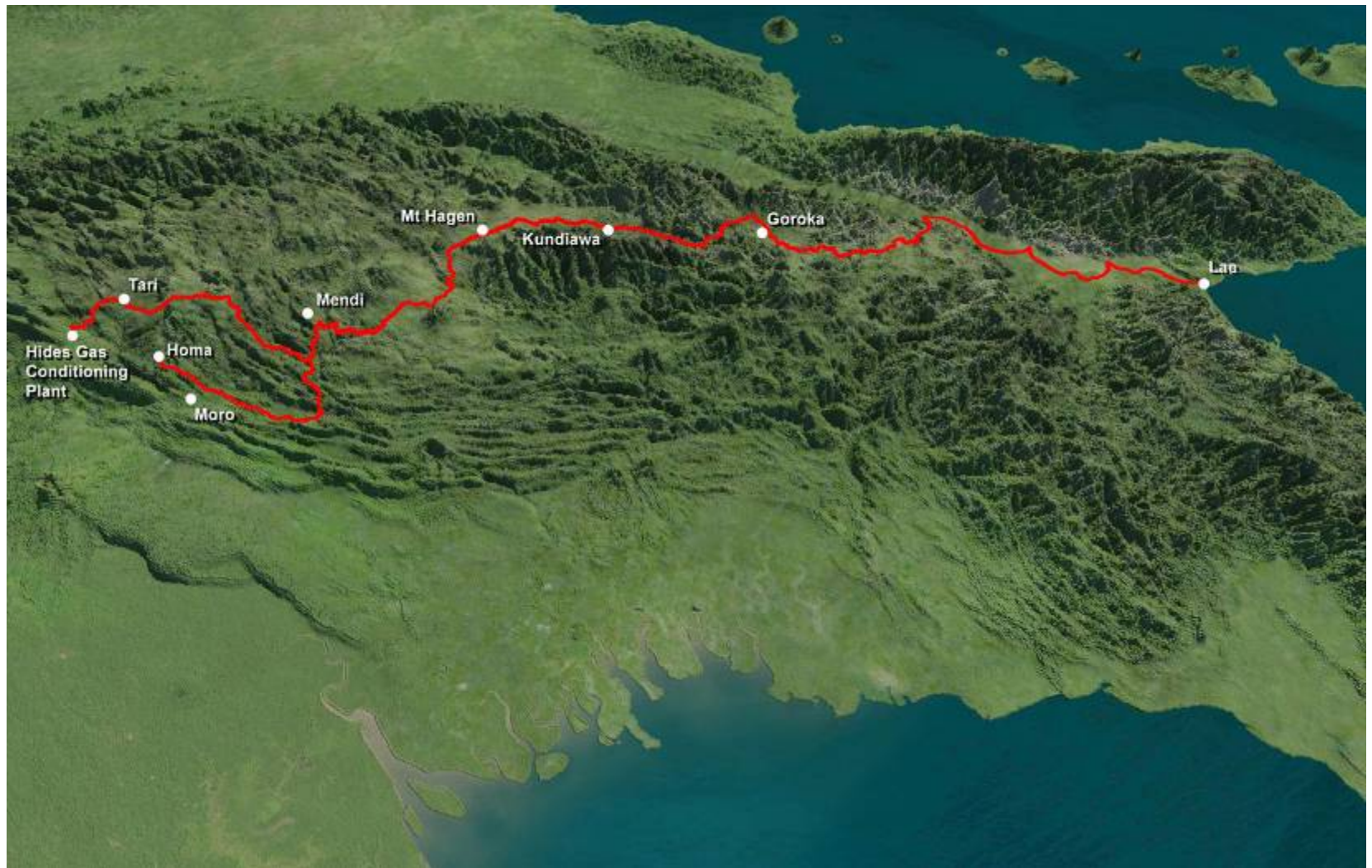
Hides Plant and Wellpads



Hides Plant and Wellpads



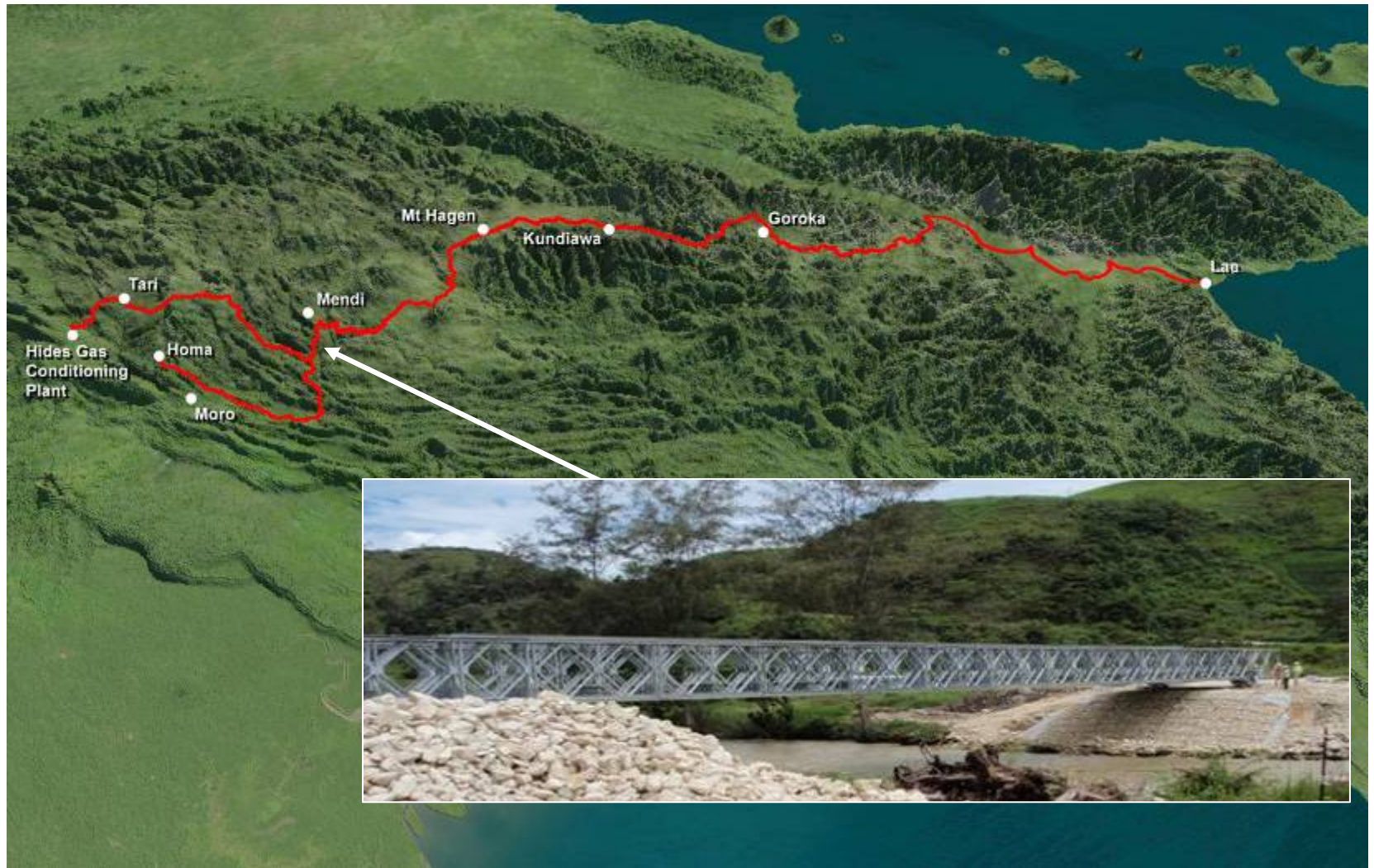
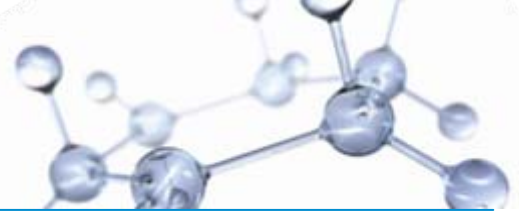
Northern Logistics Route



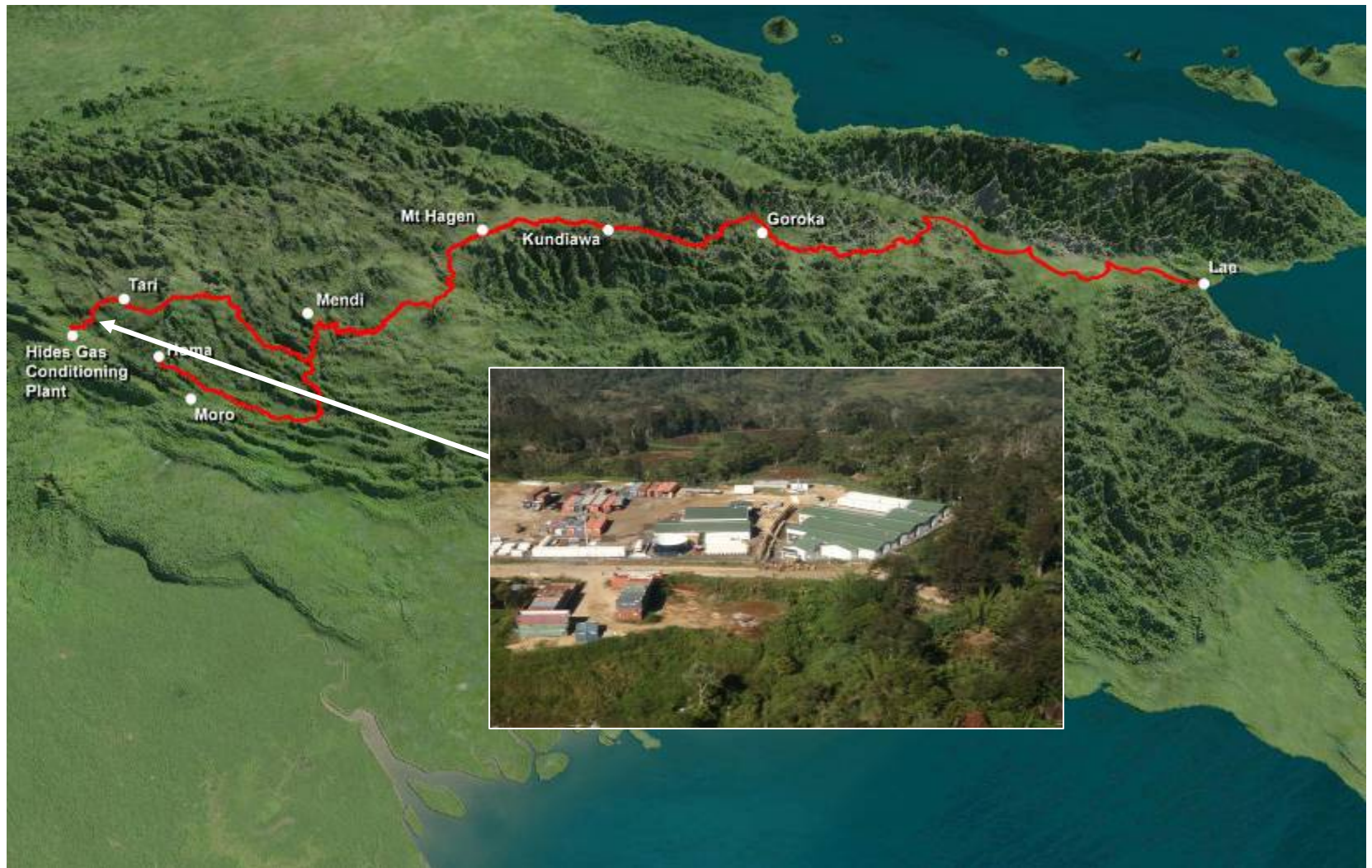
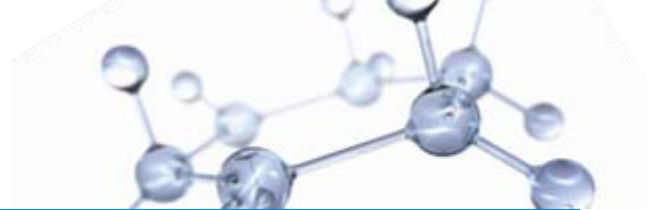
Northern Logistics Route



Northern Logistics Route

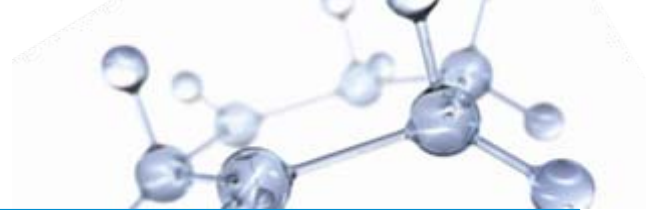


Northern Logistics Route



Project Status

- Assisting PNG companies to do business with Principal contractors
 - Enterprise Centre has 800+ business registered in Supplier Database
 - 1 billion kina invested in PNG contracts
 - 3,700 PNG nationals employed, 80% of construction workforce

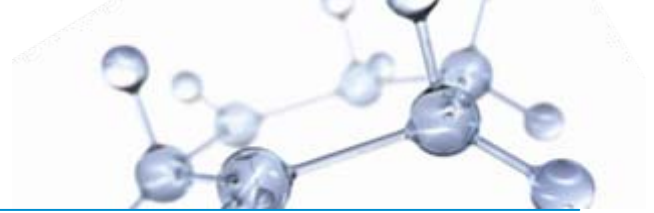


Project Status

- Training the construction workforce
 - Almost 200 trainees graduated including 40 women
 - PomTech open
 - Construction continues on Juni

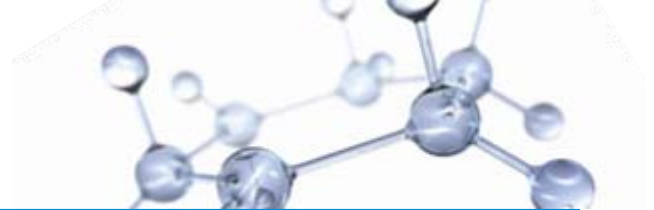


Project Status



- **First class of Operations & Maintenance trainees selected**
 - **Class includes 20 women**
 - **Trainees selected from across PNG**
 - **Training to include 12 months of Advanced Skills Training overseas**

Project Status

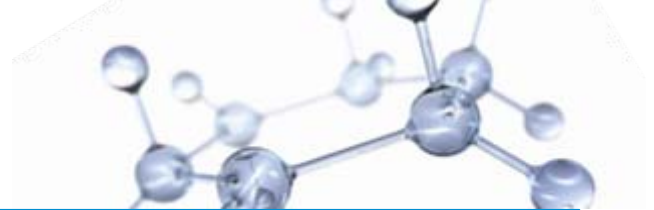


- Strengthening community relationships
 - **Continuous consultation**



Project Status

- Strengthening community relationships
 - Continuous consultation
 - Cultural Heritage Management



Project Status



- Strengthening community relationships
 - Continuous consultation
 - Cultural Heritage Management
 - Community Health Program

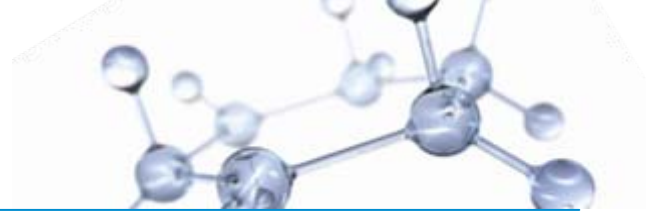


Project Status

- **Strengthening community relationships**
 - **Continuous consultation**
 - **Cultural Heritage Management**
 - **Community Health Program**
 - **Social Development**



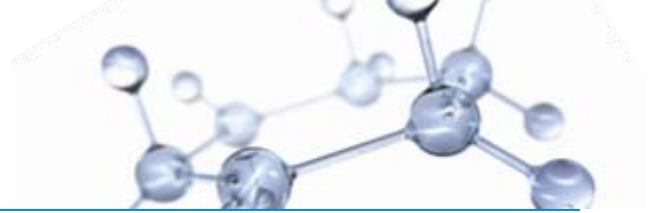
Shipping



- Ensuring safe, reliable and cost effective shipping for base volumes
- Project has chartered two sister 177,000 m³ capacity LNG tankers
- Two additional 172,000 m³ capacity LNG tankers, to be constructed in China



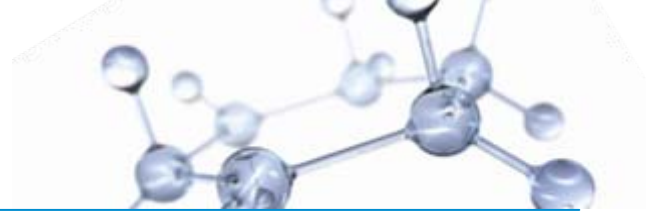
Shipping – Export Terminal



- The PNG LNG export terminal will be a 24/7 operation
- Ships will load every 3-4 days
- Four tug boats, to be built by the project, will be stationed at Caution Bay adjacent to the terminal



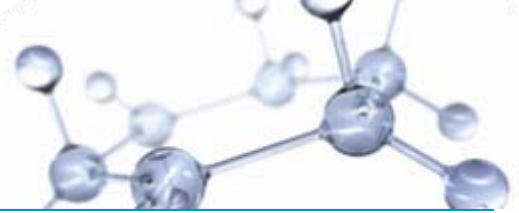
Shipping – Import Terminal



- Construction starts on Sinopec's 3MTA LNG terminal in Qingdao, Shandong
- Ground Breaking ceremony September 10
- Terminal to receive 2MTA from PNG LNG Project



Project Status Summary



- **Civil works, fencing, road and bridge upgrades, laydown areas and camp facilities**
 - LNG site camp completed
 - Earthworks underway at Hides plant and Komo airfield
 - Pipe arrives early to Kopi wharf
- **Working with partners, Government and communities to prepare critical path for main construction contractors**



ExxonMobil

Taking on the world's toughest energy challenges.™

PNG LNG Project

Decie Autin
PNG LNG Project Executive



This presentation includes forward-looking statements. Actual future conditions (including economic conditions, energy demand, and energy supply) could differ materially due to changes in technology, the development of new supply sources, political events, demographic changes, and other factors discussed herein (and in Item 1 of ExxonMobil's latest report on Form 10-K). This material is not to be reproduced without the permission of Exxon Mobil Corporation.