

**ExxonMobil**

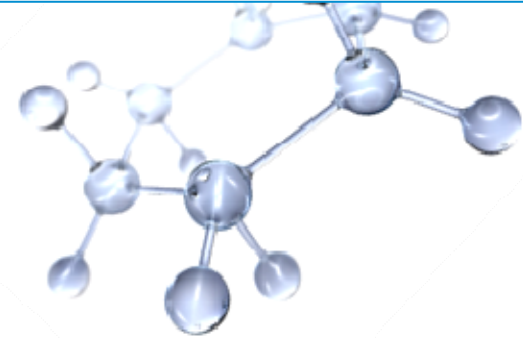
**Taking on the world's toughest energy challenges.™**

---

# PNG LNG Project

## National Content Objectives

**Miles Shaw**  
Public Affairs Manager



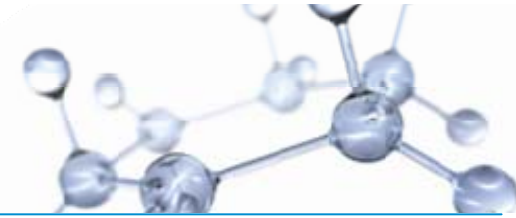
---

This presentation includes forward-looking statements. Actual future conditions (including economic conditions, energy demand, and energy supply) could differ materially due to changes in technology, the development of new supply sources, political events, demographic changes, and other factors discussed herein (and in Item 1 of ExxonMobil's latest report on Form 10-K). This material is not to be reproduced without the permission of Exxon Mobil Corporation.

# Fundamentals of Our Approach

---

- Set of core business values central to everything we do
- Integrity is our most important asset
- Consistent, disciplined approach results in reliability
- Safe, environmentally sound operations
- Capacity building and community development



**ExxonMobil**

PNG LNG is operated by a subsidiary of ExxonMobil in co-venture with:



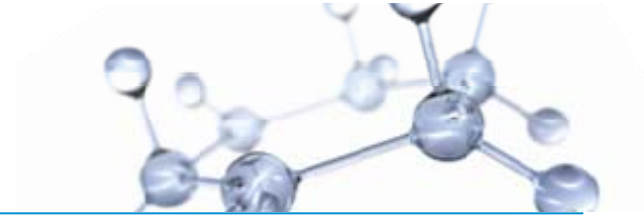
OIL SEARCH LIMITED

**Santos**

 **NIPPON OIL EXPLORATION**  
Your Choice of Energy



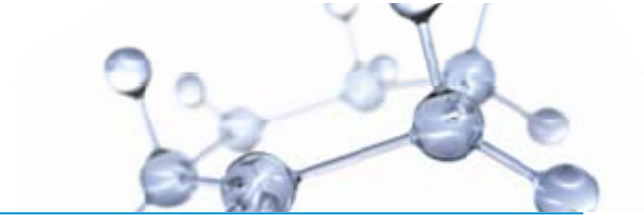
# National Content



- Defined as building capacity and capabilities of local employees, companies and communities
- Three focus areas:
  - Workforce Development
  - Supplier Development
  - Strategic Community Investments
- Ensures benefits from our projects are sustainable



# Workforce Development



- Developing programs to increase use of PNG workers while maintaining a safe, efficient operation
- Assessing manpower needs and training requirements
- Building training centers at Juni and PomTech
- Developed curricula to train workers
- Developed instructions to contract bidders on their responsibilities in training and hiring PNG citizens through Lancos

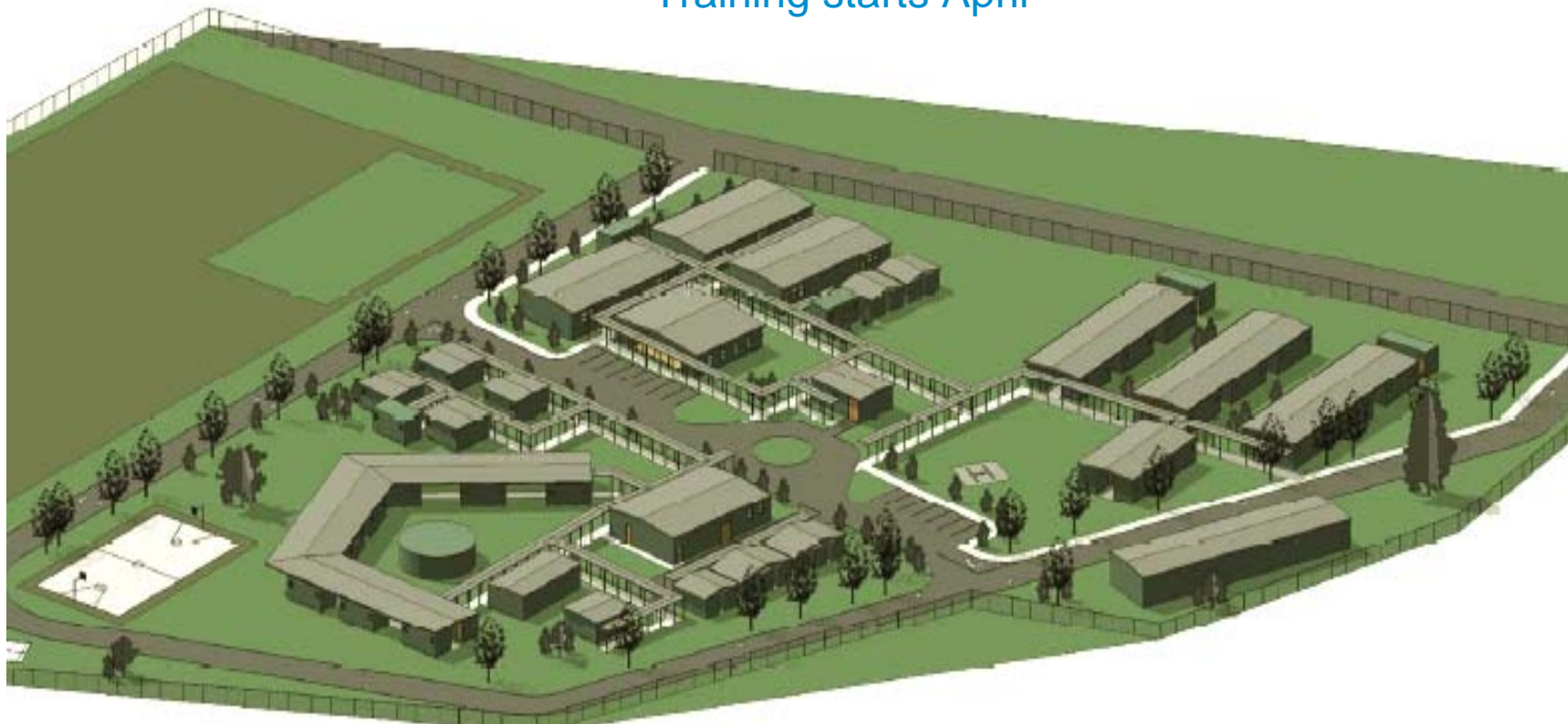


# Juni Training Centre

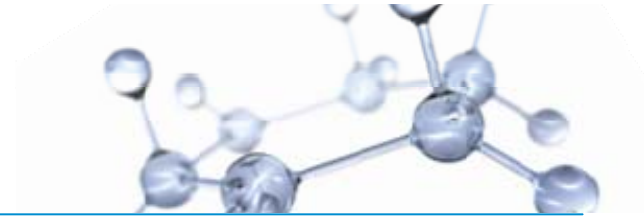


Around 200 trainees per year

Training starts April



# PomTech Training Centre



Train the  
Trainer  
Program

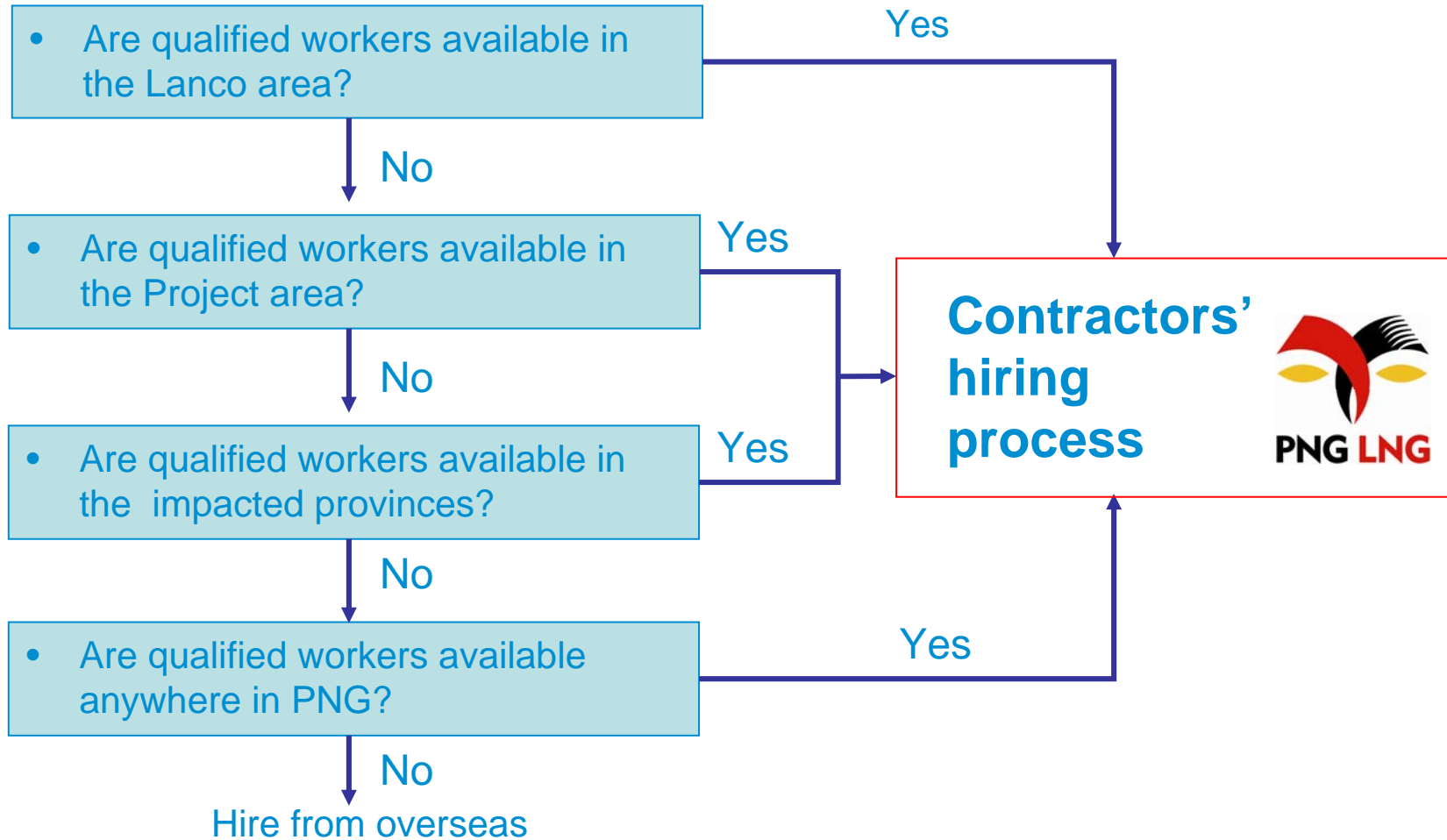
800 trainees  
per year

Training starts  
March 2010

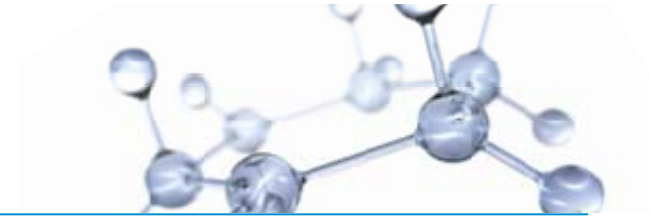


# Role of Lancos

**PNG workers will be employed through the Lancos**



# Local Business Development



## Objectives

- Increase the participation of PNG's business - independent companies and Lancos - in the PNG LNG Project
- Stimulate capacity-building of selected PNG business segments where sustainable activity is expected
- Help Lancos develop into sustainable businesses
- Encourage business relationships between Lancos and well-established companies.
- Stimulate a robust and consistent procurement process engaging independent companies in a competitive manner



# Strategic Community Investments

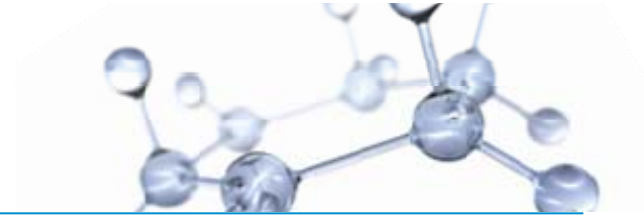


- Helping to improve the living standards in our communities
- Targeted investments in health, education, infrastructure and agricultural support.
- Community investments are outside of the State's Project Grants covered in the Benefits Sharing Agreement
- Aim to build lasting, sustainable programs



# Conclusion

---



- Exciting, challenging, nation building project
- Target FID end 2009.
- Strongly aligned joint venture and supportive government
- Opportunities for PNG Suppliers
- National Content an important part of project plan

[www.pnglng.com](http://www.pnglng.com)

