

## 33. STUDY TEAM

Coffey Natural Systems, formerly known as Enesar Consulting Pty Ltd, was commissioned by the proponent to assist in the preparation of this Environmental Impact Statement. Coffey Natural Systems engaged a number of specialist subconsultants, and the EIS draws upon their work. These contributions are gratefully acknowledged.

The following individuals contributed to the preparation of the PNG LNG Project EIS.

### 33.1 PNG LNG Project

#### 33.1.1 ExxonMobil

J. Rullman	PNG LNG Project Environmental Regulatory Lead
S. Whisker	PNG LNG Project Environmental Advisor
T. MacMillan	PNG LNG Project Regulatory Advisor

#### 33.1.2 Esso Highlands Limited

D. Roape	EHL Regulatory Advisor
D. Ekins	EHL Land and Community Affairs Manager
S. Koyama	EHL Land and Community Affairs Manager
G. Dunstan	EHL Logistics Coordinator

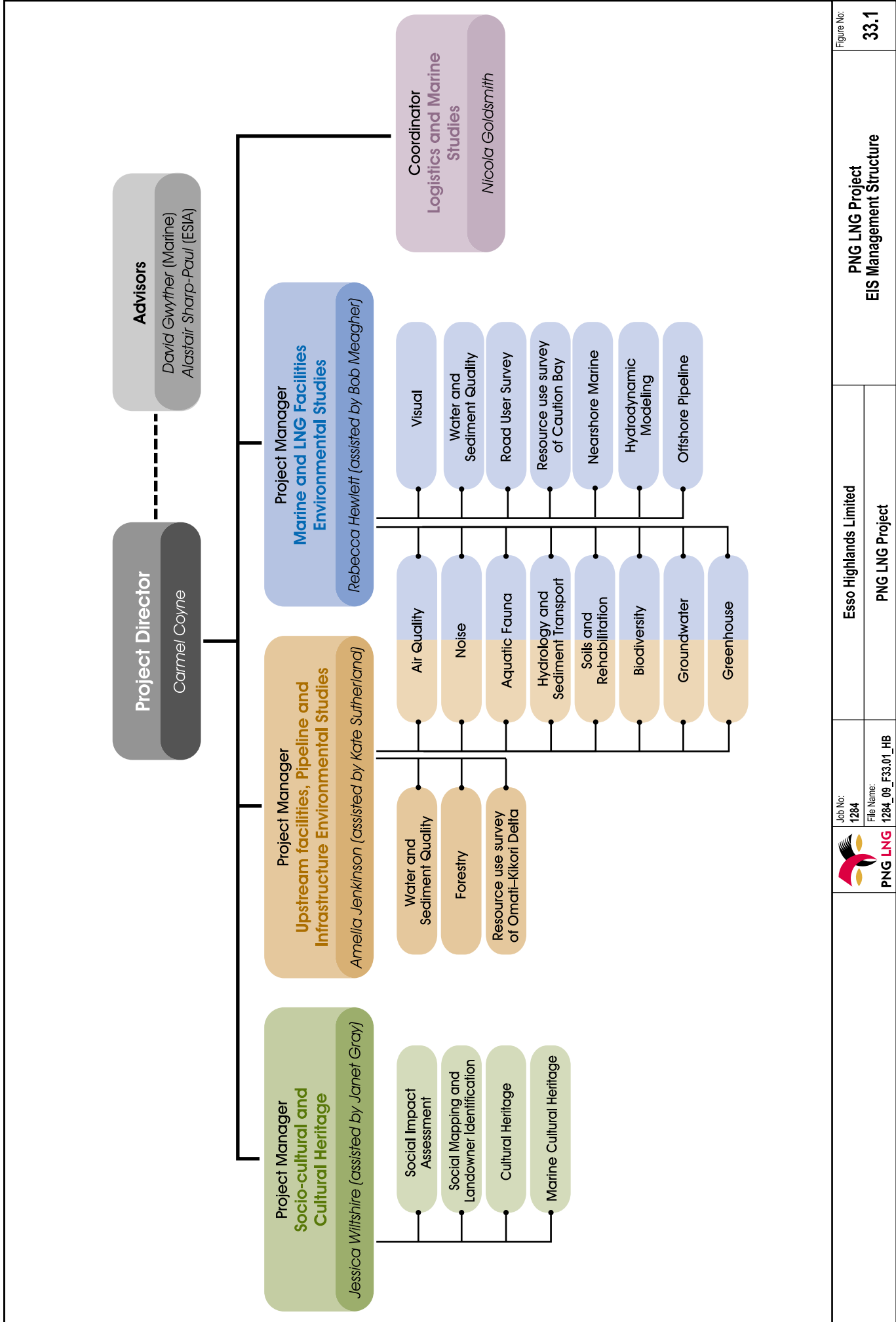
### 33.2 Consultants to the PNG LNG Project

Coffey Natural Systems, worked with environmental, social and technical consultants to prepare the EIS. Figure 33.1 is a schematic showing the structure for the PNG LNG Project EIS Management.

#### 33.2.1 Coffey Natural Systems

##### ***EIS Program Direction, Management and Reporting***

C. Coyne	Project Director, whole of project
R. Hewlett	Project Manager – LNG Facilities, Marine Facilities and Offshore Pipeline
R. Meagher	Assistant Project Manager – LNG Facilities, Marine Facilities and Offshore Pipeline
A. Jenkinson	Project Manager – Upstream Facilities and Onshore Pipeline
K. Sutherland	Project Manager (previous) – Upstream Facilities and Onshore Pipeline
J. Wiltshire	Project Manager – Socio-cultural and Cultural Heritage
J. Gray	Project Manager (previous) – Socio-cultural and Cultural Heritage
A. Sharp-Paul	Project Advisor, ESIA
D. Gwyther	Project Advisor, marine studies
N. Goldsmith	Logistic coordinator and marine specialist studies
S. Jones	Cultural heritage logistics



	Job No: 1284	Esso Highlands Limited	PNG LNG Project EIS Management Structure	Figure No: 33.1
	File Name: 1284_09_F33.01_HB	PNG LNG Project		

### ***EIS Reporting***

R. Bone	Assessment report
M. Bruce	Assessment report
L. Davidson	Assessment report
A. Goldman	Assessment report and marine specialist studies
G. Hamilton	Assessment report
D. Johnson	Assessment report
D. Martin	Assessment report
P. McEvoy	Assessment report
L. McLay	Assessment report
C. Monahan	Assessment report
M. Reeves	Assessment report
J. Rowntree	Assessment report and marine specialist study
M. Sale	Assessment report
D. Savenake	Assessment report
G. Terrens	Assessment report
A. Welk	Assessment report
T. Wood	Assessment report
M. Wright	Assessment report

### ***Marine Specialist Studies***

D. Gwyther	Marine Studies Director
K. Blackman	Marine specialist study (previous)
B. Cohen	Dive Master and marine specialist study
E. Andrieux	Marine specialist study
M. Ellis	Marine specialist study

### ***GIS and Graphics***

G. Young	GIS and Graphics Manager
K. Bull	Graphics
H. Blaszkiewicz	Graphics
C. Charles	GIS
C. Choudhury	GIS
D. Smith	GIS
H. Unkovich	GIS/graphics

### ***Technical Edits and Administration***

K. Albion	Administration/proofreading
J. Bant	Administration/proofreading
J. Holmstrom	Administration/proofreading
J. Keynton	Administration/proofreading
A. Kung	Administration/proofreading
A. McCarthy	Administration/proofreading
N. Sharp-Paul	Administration/proofreading
J. O'Neil	Administration/formatting
D. Young	Administration/formatting

### ***Technical Specialist***

D. Oram                      Technical support

### **33.2.2 Biodiversity Consultants**

#### ***Francis Crome Pty Ltd***

F. Crome                      Biodiversity studies team leader

#### ***Greg Richards and Associates, Pty Ltd***

G. Richards                  Bat study

#### ***The Herbaria and Arnold Arboretum of Harvard University and the Forest Research Institute, Lae***

W. Takeuchi                  Flora study

#### ***World Wildlife Fund PNG***

T. Mamu                      Mammal study

#### ***Other Biodiversity Specialists***

S. Richards                  Herpetofauna study

I. Woxvold                    Avifauna

### **33.2.3 Cultural Heritage Consultants**

#### ***Monash University***

B. David                      Cultural heritage team leader (LNG and marine facilities)

T. Denham                    Cultural heritage team leader (Juha–Hides)

B. Duncan                    Marine cultural heritage team leader

S. Allen                        Marine cultural heritage

J. Ash                          Cultural heritage

A. Beddingfield              Cultural heritage

A. Gartrell                    Cultural heritage

E. Kirkpatrick                Marine cultural heritage

L. Mills                        Marine cultural heritage

#### ***Social Research Institute***

J. Muke                        Cultural heritage team leader (upstream)

T. Kokents                    Cultural heritage

T. Mangi                      Cultural heritage

J. Sepe                        Cultural heritage

#### ***Papua New Guinea National Museum and Art Gallery***

N. Araho                      Cultural heritage

J. Dop                         Cultural heritage

P. Kop                         Cultural heritage

A. Kuaso                      Cultural heritage

H. Mandui                    Cultural heritage

### ***University of Papua New Guinea***

M. Leavesley Cultural heritage field team leader

### ***Australian National University***

C. Ballard Cultural heritage peer review

### ***University of South Queensland***

B. Baker Cultural heritage

## **33.2.4 Social Studies Consultants**

### ***Laurence Goldman and Associates***

L. Goldman Social impact assessment team leader  
T. Ernst Social mapping and landholder identification  
M. Finlayson Social impact assessment  
H. Johnson Social impact assessment  
M. Schubert Social impact assessment  
J. Weiner Social mapping and landholder identification  
P. Kavan Caution Bay resource use survey

### ***New Fields***

M. Balge Health impact assessment  
G. Krieger Health impact assessment

### ***University of Papua New Guinea***

L. Digim'rina Road user survey team leader  
P. Fa'afo Road user survey team leader  
S. Marigata Road user survey  
J. Numa Road user survey  
N. Siyoula Road user survey  
L. Tokovaria Road user survey  
F. Tubwenina Road user survey

## **33.2.5 Specialist Consultants**

### ***ACIL Tasman***

P. Balfe Economic modelling and assessment

### ***Booyong Forest Science***

H. Rogers Forestry, and soil and rehabilitation studies  
B. Bau Forestry, and soil and rehabilitation studies

### ***CSIRO***

G. Cresswell Satellite data interpretation

***David Balloch and Associates***

D. Balloch                      Assessment report peer review

***David Sinclair Proprietary Limited***

D. Sinclair                      Assessment report

***Curtin University of Technology***

R. McCauley                      Acoustic modelling

A. Duncan                      Acoustic modelling

***EDAW/URBIS***

P. Haack                      Visual impact assessment

***Global Environmental Modelling Systems***

G. Hubbert                      Hydrodynamic modelling

***Heggies Pty Ltd***

G. Reutersward                      Environmental noise impact assessment

***Holmes Air Sciences***

N. Holmes                      Air quality impact assessment

***Hydrobiology***

A. Flynn                      Water and sediment quality baseline, and aquatic fauna impact assessment

B. Pearson                      Hydrology and sediment transport

***Kewan Bond Pty Ltd***

K. Bond                      Greenhouse gases and climate change

***SKM/REM***

P. Howe                      Groundwater impact assessment

***Ure Risk Engineering***

D. Ure                      Risk analysis and assessment

R. Thornton                      Land access and licensing

**33.2.6 Other Project Consultants**

L. Jacobsen                      Assessment report and technical editor