



EXXONMOBIL PNG LIMITED



## Papua New Guinea LNG Project

# Moran to Kutubu (KP 65.5 – 80.0) CRP Addendum No. 1: KP69.7 to KP71.3 Earthquake Associated Landslip

PGHU-EH-SPZZZ-490033

Rev #	Rev Date	Description	Prepared By	Discipline Checked	Endorsed via Email		Approved Via Email
0	13-Jan-2021	Issue for Use	S. Ivahupa	N. Khanim	J. Jaskolski (Projects)	10 <sup>th</sup> Jan 2021	J. Housley L&CA Superintendent  13 <sup>th</sup> Jan 2021
					N. Khanim (ERB Manager)	11 <sup>th</sup> Jan 2021	
					D. Baggs (Law)	12 <sup>th</sup> Jan 2021	
					R. Haguai (L&CA Operations)	12 <sup>th</sup> Jan 2021	

## Contents

ACRONYMS .....	iii
1. Introduction.....	4
2. Proposed Activities.....	4
3. Social and Cultural Impacts .....	6
4. Stakeholder engagement .....	7
5. Compensation .....	7
6. Organizational Roles and Responsibilities.....	7
7. Budget.....	7
APPENDICES .....	8

**FIGURES**

**Figure 1: Earthquake Recovery Sites for PNG LNG ..... 5**

**TABLES**

**Table 1: List of proposed activities ..... 4**  
**Table 2: Predicted impacts and Mitigation Measures ..... 6**

**ACRONYMS**

<b>ACRONYM</b>	<b>Definition</b>
EQR	Earthquake Recovery
IPCA	In Principle Clan Agreements
KP	Kilometer Point
PNG	Papua New Guinea
RAP	Resettlement Action Plan
ROW	Pipeline Right of Way

## 1. Introduction

On February 26<sup>th</sup> 2018 a magnitude 7.5 earthquake struck the Southern Highlands region with the epicenter located approximately 10-12 kms from the Hides plant-site. This was followed by several weeks of aftershocks. Damage from the earthquake was extensive, necessitating repair and ongoing maintenance works along sections of the pipeline. Some of these works require access to areas not occupied or used by local communities, some will lead to economic and potentially physical displacement, while others will involve land that remains unstable as a result of the earthquake and where economic and potentially physical displacement is required in order to mitigate on-going safety risks to communities.

EMPNG has developed a repair and maintenance program for 2021, following series of ground and technical assessments, for a section of the pipeline in the vicinity of KP 70. No social assets exist at this location, and hence no economic or physical displacement is required.

This document is prepared as an addendum to the Moran to Kutubu (KP 65.5 – 80.0) Communal Resource Plan (CRP), document No. PGHU-EH-SPZZZ-490011 approved in October 2011, and it describes where temporary access and workspace is required to complete the works. The scope and format of the Addendum is consistent with previous Addendums and conforms with the requirements of the Land Access, Resettlement and Livelihood Management Plan – Production (PGGP-EH-OPZZZ-000004-006).

## 2. Proposed Activities

Proposed pre-construction and remediation works will include establishment of an access road off the main public road, a temporary fenced staging area and storage area. At the completion of the works, the access road will be scarified, the fence will be removed and disturbed areas will be reinstated.

Duration of the overall repair and maintenance program, of which the above activities form a part, is expected to be 12 months, commencing January 1<sup>st</sup> 2021.

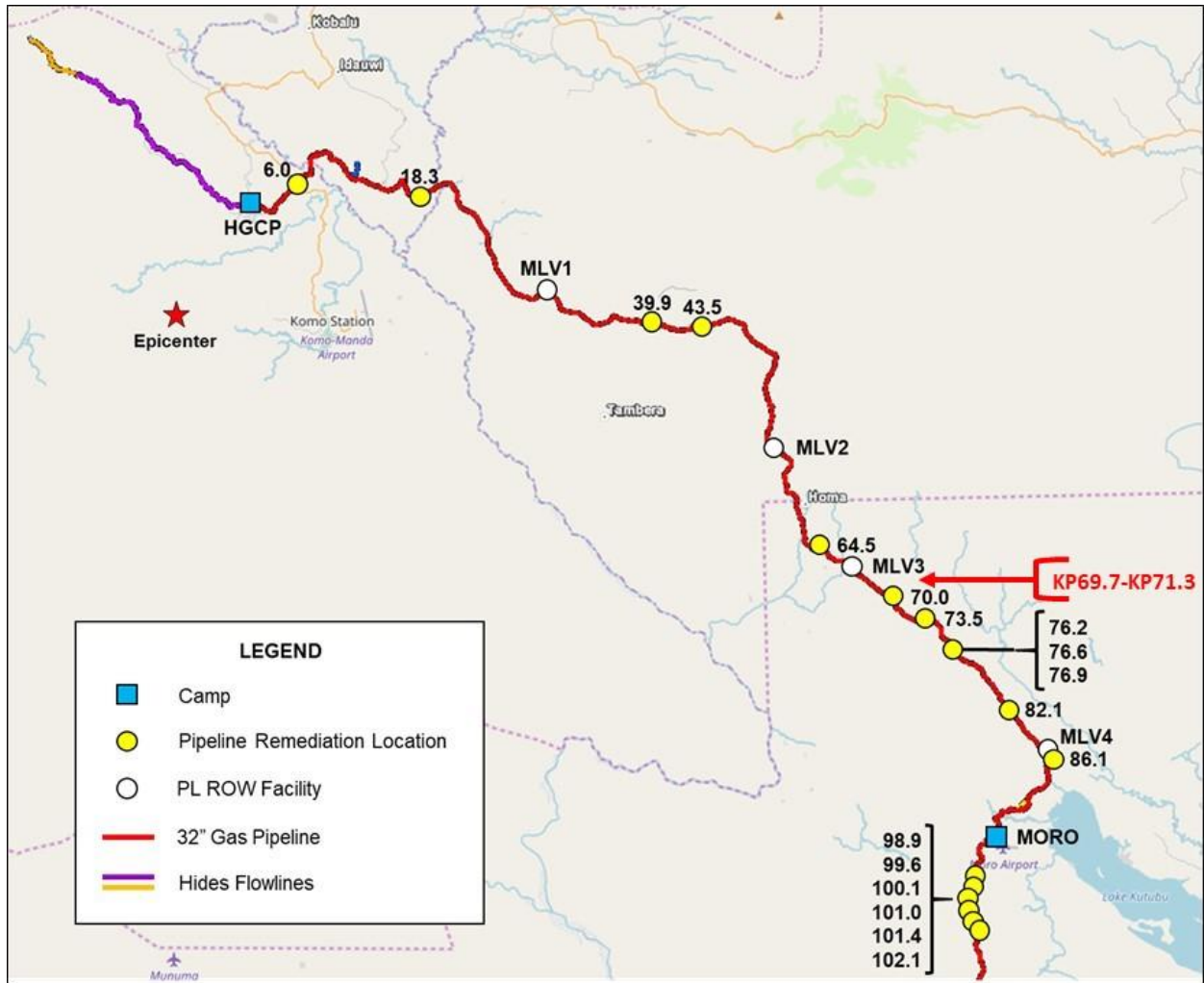
**Table 1:** List of proposed activities

Activity	Location	Description	Area/Distance
Access Road	KP70 through to KP71.3	Road construction	~1km
Fenced Area	KP69.7	Establishing of a fenced perimeter	8ha
Staging Area	KP70.0	Ground disturbance	
ROW Repair	KP69.7 to KP71.3	Ground disturbance	

All of the activities listed in Table 1 fall within IPCA Area 9 – Tubage to Homa, signed in August 2009.

Figure 1 shows all the locations identified for earthquake recovery works and the area covered by this addendum has been highlighted in red font.

Figure 1: Earthquake Recovery Sites for PNG LNG



### 3. Social and Cultural Impacts

Predicted impacts associated with the activities summarized in Table 1 are outlined in Table 2. Identified impacts are those that are predicted to occur based on results of a site investigation and the development and adoption of avoidance and mitigation measures. None of the proposed activities will result in physical displacement.

**Table 2:** Predicted impacts and Mitigation Measures

Nearest KP Area	Description	Resource Use	Impact	Mitigation Measure
KP69.7-KP71.3	Trees	Source of materials for constructing houses	Community would need to walk longer distances to collect building materials, exposing themselves to tribal enemies and other securities issues	Avoidance
KP70	Pig fence	A short fence constructed across a pig track in a secondary forest	Food gardens will be destroyed as pigs would have an open access to the gardens	Avoidance
KP70	Moro-Homa-Paua Road	The road is the main access between Moro and Homa-Paua.	Interrupted traffic  Noise pollution  Dust pollution	<ul style="list-style-type: none"> <li>- Community engagement before actual work starts so community anticipates Project presence in the area</li> <li>- Project speed limit of 45kph will be adhered to and management procedures put in place including traffic safety programs</li> <li>- Employment of Spotters who will help controlling the traffic</li> <li>- Manage work hours: Start and finish times for construction works will be at decent hours</li> <li>- Dust will be managed using water trucks for road watering</li> </ul>

All cultural, spirit and oral sites identified in the required construction area were identified during foundation period and were actioned. All required activities associated for the sites have been completed.

#### **4. Stakeholder engagement**

The first public consultations associated with resettlement activities were conducted in this area in October 2011. Another public consultations in relation to this proposed earthquake remediation activities were held between 3-5 December 2020, where a consultation with the main clan took place on 4 December 2020.

The most recent engagement activities included discussions on the Grievance Management process, including grievance lodgment process by community members and how these are managed.

#### **5. Compensation**

There is no compensation anticipated or expected, in the event where a compensation is needed, it will be assessed based on the actual impact(s) and managed according to the process set forth in the Eligibility and Entitlements matrix contained in the Land Access, Resettlement and Livelihood Management Plan – Production (PGGP-EH-OPZZZ-000004-006). This matrix relevant to the anticipated compensation is reproduced in Appendix 1.

#### **6. Organizational Roles and Responsibilities**

Overall responsibility for the planning, implementation and monitoring of physical and economic displacement rests with the Company. The Company's Lands & Community Affairs through its Land team leads the resettlement activities. The team will be responsible for these activities.

#### **7. Budget**

A special budget of ~USD20k has been allocated for Earthquake repair related activities and it includes forest damage and deprivation for costs to clans as well as losses associated with individual gardens and trees, and other social infrastructure in any EQR sites including the area covered by this Addendum.

## APPENDICES

### Appendix 1: Remediation Eligibility and Entitlements Criteria (Source: Land Access, Resettlement and Livelihood Restoration Plan, 2016)<sup>1</sup>

ELIGIBILITY CATEGORY	DAMAGE OR LOSS	REFERENCE	COMPENSATION/ASSISTANCE/SUPPORT
Recognised landowner for garden land	Loss of use of land as a result of deprivation to landowners by the Project.	<i>Oil and Gas Act 1998</i> s.118(2)(a)	Compensation paid at agreed intervals directly and publicly to landowner.
Recognised owner of construction such as a house	Loss of man-made constructions such as houses and fences.	<i>Oil and Gas Act 1998</i> s.118 (2) (b) (i)	Compensation for replacement of house, fences etc.
Recognised landowner for garden land	Damage to land surface.	<i>Oil and Gas Act 1998</i> s.118(2)(b)(i)	Project compensation at Valuer General rates for garden contents.
Recognised owner of economic trees	Damage to any trees of economic value.	<i>Oil and Gas Act 1998</i> s.118 (2)(b)(ii)	Cash (Valuer General rates) as and when damage occurs, paid publicly by the Project to the owner.

<sup>1</sup> Where applicable, the calculation basis for determining compensation, assistance, or support as identified in in this Appendix, shall be based upon the valuation methodology specified. Where not expressly stated, compensation, assistance or support, if applicable, shall be determined in accordance with the laws and regulations of Papua New Guinea and EMPNG policies and guidelines.