

ExxonMobil PNG Limited



Papua New Guinea LNG Project
**Kantobo to Kutubu (KP 80-153) CRP
Addendum #2:
Construction Support Sites**

PGHU-EH-SPZZZ-490024

CONTENTS

1.0	OVERVIEW	2
2.0	SOCIAL IMPACTS	3
	Figure 1: Construction Support Sites for KP 80-153	5
	Table 1: List of Changes Covered by Addendum #2	2
	Table 2: Impacts Identified	3

1.0 OVERVIEW

This is the Kutubu to Kantobo (KP 80-153) Communal Resource Plan Addendum #2: Construction Support Sites.

This CRP briefly describes the pipeline re-routes, shoofly and access roads, quarries, laydowns and supporting infrastructure changes required due to difficulties associated with terrain for construction and logistics traffic (see Table 1).

Four existing quarries were identified to provide material for construction activities, as mentioned in Section 1.4.1.3 of the Kantobo to Kutubu (KP 80-153) CRP. The quarries may also be used as laydown areas following completion of material extraction. The disturbed section(s) of the quarry shall be restored during final restoration of the ROW and any steep slopes shall be battened or adequately benched.

Table 1: List of Changes Covered by Addendum #2

Intervention	Location	Description	Area / Distance
Reroute	KP 101 to KP 99.5	Kutubu Spurline	4.92 ha
Reroute	KP 97.6 to KP 96.6		5.60 ha
Quarry	KP 91.6	Kaimari Quarry – previously disturbed	Existing 3.21 ha
Quarry	KP 86	Tugubi Quarry – previously disturbed	Existing 1.74 ha
Quarry	KP 118.9	KP 118.9 Pinnacle Quarry	Existing 0.78 ha
Quarry	KP133.5	Sumata Quarry – previously disturbed	1.18 ha
Laydown	KP 104.2	Partially disturbed	0.46 ha
Laydown	KP 109.5	Undisturbed	0.30 ha
Laydown	KP 122.2	Disturbed area	0.44 ha
Access / Shoofly Track	KP 81.3	Undisturbed	2.11 ha
Access / Shoofly Track	KP 85.3	Partially disturbed	3.60 ha
Access / Shoofly Track	KP 96.7	Disturbed area	0.08 ha
Access / Shoofly Track	KP 100	Undisturbed	0.25 ha
Access / Shoofly Track	KP 101.8	Undisturbed	0.50 ha
Access / Shoofly Track	KP 104.2	Undisturbed	0.07 ha
Access / Shoofly Track	KP 107.5	Undisturbed	1.10 ha
Access / Shoofly Track	KP 109.5	Undisturbed	0.03 ha
Access / Shoofly Track	KP 116.8	Disturbed area	0.48 ha
Access / Shoofly Track	KP 122.2	Partially disturbed	0.32 ha
Access / Shoofly Track	KP 137	Disturbed area	0.07 ha
Infrastructure	KP 89 to KP 90	Horizontal Directional Drilling (HDD) Platforms	1.49 ha
Infrastructure	KP 94	Check Valve Station (CV2)	0.24 ha
Infrastructure	KP 106.5	Kutubu Mainline Valve Station	3.38 ha
Infrastructure	KP 148	Cathodic Protection (CP1)	1.15 ha
TOTAL			33.50 ha

All of these interventions fall within IPCA Area 9 – Tubage Junction to Homa – signed in August 2009.

2.0 SOCIAL IMPACTS

These infrastructure changes will not result in any physical displacement. Various impacts were identified within the Addendum #2 area and are described in Table 2.

Table 2: Impacts Identified

Nearest KP	Description	Resource Use	Context (Significance)
KP 81	Trees	Clan owned trees (i.e., pandanus, bamboo, etc.)	Feature will be disturbed and compensated accordingly.
KP 81 to KP 87	Road	A vital access road for the travelling public between Moro and Poroma.	Feature will be temporarily disturbed.
KP 87	Drainage ditch	Drainage channel installed at the edge of a wetland along the Moro to Poroma Road.	Feature will be disturbed.
KP 87	Tugibu River	Source for fishing and a tributary of Lake Kutubu.	Major waterway located at the edge of the survey area.
KP 89 to KP 90	Trees and crops	Food source or material for constructing houses	Features will be disturbed
KP 100	Hunting ground	Used occasionally as a hunting ground to access food sources.	Alternative hunting grounds are available.
KP101.8	Garden	Active subsistence garden	Feature will be disturbed.
KP107.7	Water, stream	Piped water resource from Pipi Stream further upstream used for drinking	Feature will be disturbed.
KP109.5	Moro-Poroma Road	The road is the main access road between Moro and Kikori. Interrupted traffic, noise and dust.	Access to the road will be maintained during construction and safety risks mitigated. The project speed limit of 40 kph will be stringently obeyed, and relevant traffic management procedures put in place including undertaking of traffic safety programs with the local communities.
KP116.8	Garden	Fallow garden with subsistence crops and trees	Feature will be disturbed.
KP118.9	Garden	Active subsistence garden	Feature will be disturbed.
KP118.9	Garden	Active subsistence garden	Feature will be disturbed.
KP118.9	Garden	Active subsistence garden	Feature will be disturbed.
KP 122.2	Trees	Clan owned trees (i.e., pandanus, bamboo, etc.)	Feature will be disturbed and compensated accordingly.

Initial resettlement public consultations were conducted in December 2010. Further consultations were held in the impacted areas in September 2012 through November 2012, including full consultation with the Lake Kutubu Wildlife Management Committee.

Compensation will be managed according to the processes set forth in the Eligibility and Entitlements matrix contained in the original Kutubu to Kantobo (KP 80–153) Communal Resource Plan. (http://www.pnglng.com/commitment/resettlement_action_plans.htm);

Figure 1 shows the location of the additional construction support sites (i.e., access tracks, shoofly roads, mainline valve station, etc.) covered by this addendum.

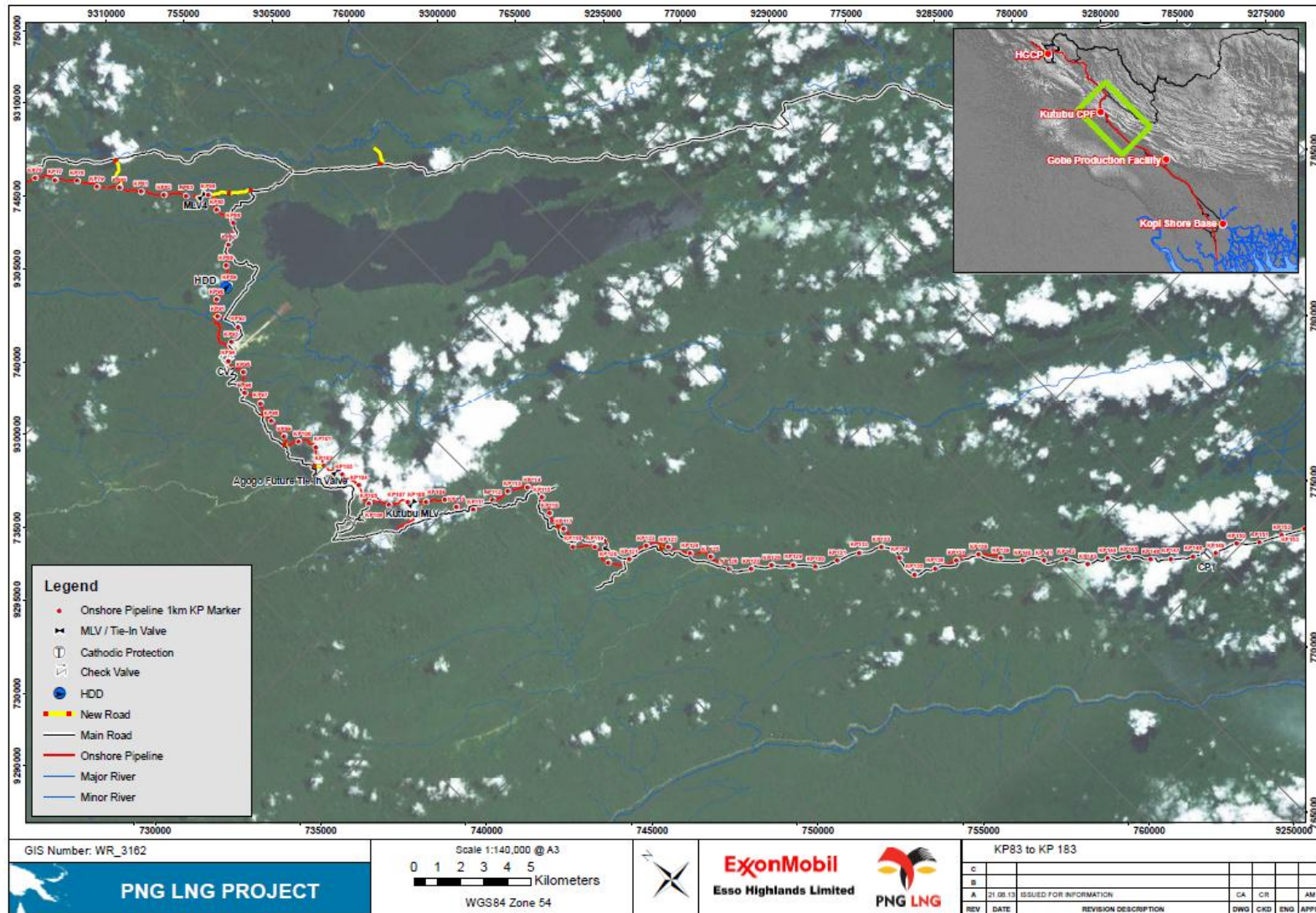


Figure 1: Construction Support Sites for KP 80-153